



**NQuire 1000
Manta II**
micro kiosk

FEATURES

A commercial grade, multi-functional micro kiosk. Get in touch with your target audience through self-service or use the NQuire 1000 Manta II as a low-cost entry-level Android POS system for everyday use.

Fully functioning CIT system.

With Octa-Core Cortex-A53 CPU up to 1.5GHz.

Easy to install and use anywhere.

Ideally suited for shelf mounting or on-counter usage in department stores, supermarkets, small grocery stores, pharmacy/cosmetic stores, tobacco kiosks and more.

Snappy reading performance.

Armed with Newland's EM2037-V4, 2D megapixel barcode scanner. The engine has a 20 degree scan angle for comfortable scanning of larger products. Also, available without a scanner.

Easily build applications.

The NQuire 1000 Manta II is built on Android 7.1, allowing for easy development of custom applications, tailored to your needs.

Highly customizable with a broad range of features.

Dual band WiFi, Bluetooth embedded, front 5Mp camera, POE, speaker.

Variety of mounting accessories.

Foldable desktop stand, VESA magnetic shelf stand, VESA wall mount.

Buckets: Newland's MDM software.

Buckets allows you to monitor and manage all devices in the field from one central administrated location. This MDM software enables you to distribute your APK's, update firmware or settings and many other functions. Buckets MDM software is pre-installed on the NQuire 1000 Manta II and includes 7 years license-free usage.



NQuire 1000 Manta II with STD1200 desktop stand.

Application Scenarios

Self-service • access control • price checking • time attendance • airport check, O2O.

Performance	SOC	RK3368, Cortex-A53 1.5 GHz , PowerVR G6110 GPU
	Operating System	Android 7.1
	Memory	2GB DDR3, 8GB eMMC
Physical	Dimensions	252 × 184 × 33mm
	Material	PC + ABS plastic
	Weight	615 grams, main body only, without power adapter and metal bracket
	Display	10.1" WXGA, 1280*800 TFT LCD display/ 10 points Capacitive Touch
	VESA mount holes	Metal fitting mounting screw holes: 75*75 mm
Power Supply	Clock Battery	Lithium-ion non-rechargeable coin battery for RTC
	DC - input	AC 100-240V, 50-60Hz, 2A Max, DC12V±5%
	Power consumption	1KHz audio playback etc. about 18W maximum, OFF: 0W
	LED Indicator	1x LED / Power Supply ON: red, then turns green once kernel boot up Power Supply OFF: LED off
Environmental	Operating Temperature	0°C to 40°C (32°F to 104°F)
	Storage Temperature	-10°C to 55°C (14°F to 131°F)
	Humidity	20% to 65% (40°C)
	Sealing	IP54 (front panel)
Barcode Scanning	1D Barcodes	Code 128, EAN-13, EAN-8, Code 39, UPC-A, UPC-E, Codabar, Interleaved 2 of 5, ITF-6, ITF-14, ISBN, Code 93, UCC/EAN-128, GS1 Databar, GS1 Composite Code, Matrix 2 of 5, Code 11, Industrial 25, Standard 25, Plessey, MSI-Plessey, etc.*
	2D Barcodes	PDF417, QR Code, Data Matrix, Chinese Sensible Code, Aztec Code, Maxicode, MicroPDF417, etc.*
Connectivity	WiFi	IEEE 802.11 a/b/g/n/ac
	Bluetooth	BT 4.1
	LAN	RJ45 Ethernet, 10/100/1000 BaseT / POE (Power Over Ethernet)
Peripherals	Camera	Front: 5.0 MP camera
	Audio	1x 3.5mm Headset + MIC jack, 2x Integrated speakers 8Ω / 1.3W
	Sensor	G Sensor
	Other H / W	VESA mount: Metal-fitting mounting screw holes
	Functional keys	(Vol+ / Vol-) / (Up / Down) / Back / Power switch
	Optional Module	NFC reader / MSR reader (available in Q2/2019)
I/O Ports	USB Port	1x USB 2.0 host, type A port, 1x Micro USB 2.0 port
	SD Card Slot	SD Card (SDHC class 10 compatible) slot with cover
	GPIO Port	1x GPIO port
	Expansion Slot	2x POGO-PIN, USB 2.0 / Supports up to two modules working concurrently
	DC-in	4mm DC-In jack, 12V / 2A

NQuire 1000 Manta II Micro kiosk

newland-id.com

Multimedia	Video	MKV, TS, FLV, AVI, VOB, MPG, DAT, ASF, RM, MOV, 3GP, MP4, WMV
	Audio	MP2, WMA, WAV, AAC, OGG, ASF
	Picture	JPG, BMP, GIF
Certificates		CE, FCC, RoHS
Default Accessory		Multi-pin, multi-plug AC/DC adapter with power cord VESA 75 Wall Mount
Packaging		1PCS packaging box dimensions: 291*204*84mm
		10PCS packaging box dimensions: 437*306*434mm

*Specifications are subject to change without notice *

Version: 1.0

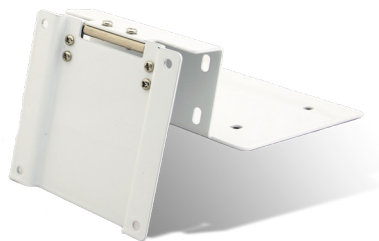
*For a complete list of all supported barcode symbologies, please refer to EM2037-V4 User Guide for the supported Symbologies.



Mounting accessories



Foldable Desktop Stand



VESA Magnetic Shelf Stand



VESA Wall Mount



Newland

SCANNING MADE SIMPLE

Newland EMEA HQ

8 (800) 100 46 22
info@newland-id.com
newland-id.com

D-A-C-H

+49 (6) 182 82916-16
info@newland-id.de

Benelux

8 (800) 100 46 22
benelux@newland-id.com

Italy

+39 (0) 342 0562227
italy@newland-id.com

United Kingdom

+44 (0) 7771 631387
info@newland-id.co.uk

South Africa

Gauteng: +27 (0) 11 553 8010
Cape Town: +27 (0) 21 9140819
info@newland-id.co.za

Turkey

+90 (0) 544 538 40 49
turkey@newland-id.com

France

+39 (0) 345 8804096
france@newland-id.com

Ibérica

8 (800) 100 46 22
info@newland-id.es

Nordic & Baltic

+46 (0) 70 88 47 767
nordic@newland-id.com

Russia

+31 (0) 345 87 00 33
russia@newland-id.com

Middle East

+39 (0) 345 8804096
middleeast@newland-id.com

Iran

+90 (0) 544 538 40 49
iran@newland-id.com